



Additional Bezel Options



KX2 2.8 inch In-Wall Touchpanel Keypad

The KX2 in-wall touchpanel has a clean, sleek design with twelve programmable hard buttons and a 2.8" color touchscreen. The hard buttons and graphic interface are fully programmable using RTI's Integration Designer® software for full control of electronics throughout the building. A built-in infrared output port allows direct control or get two-way control when used with an RTI XP series control processor. In addition, the unit's integrated 10/100Base-T Ethernet port with Power-over-Ethernet (POE) provides the flexibility to accommodate any installation.

Key Features

- Fully customizable 2.8" touchscreen display and twelve assignable/programmable buttons.
- QVGA resolution (240w x 320h) TFT LCD to display custom buttons, text and graphics.
- Integrated 10/100Base-T Ethernet port with Power-over-Ethernet.
- IR output drives up to 1000 feet of wire.
- Proximity sensor automatically wakes the unit up when approached by the user and an ambient light sensor adjusts the brightness.
- Integrated mounting wings for easy installation in retrofit installs.
- Fits in a 4"x4" square electrical junction box (See important information reverse side of this page). **
- Ships with stylish, low-profile white bezel - bezels also available in black, light almond and brushed aluminum.
- Faceplate and buttons are black with a glossy finish.
- Optional modules/processors for voltage sensing, relays and advanced two-way control.
- USB and Ethernet programming.

Call 952-253-3100

www.rticorp.com

Specifications

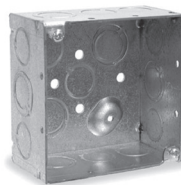
| | |
|-------------------------------------|----------------------------------------------------------|
| Power..... | +9VDC to +16VDC, 1A max |
| Power Management..... | Adjustable backlight brightness, Ambient light sensor |
| | Proximity sensor |
| Touchscreen Display..... | High-brightness color TFT LCD |
| | QVGA (240w x 320h pixels) with 65K colors |
| | Integrated high-resolution resistive touchscreen |
| Display Size..... | 2.8" (71mm) diagonal |
| Display Backlight..... | LED Backlit, 200nit |
| Infrared Output..... | Through control port, 200mA output |
| | Drives up to 1000 ft (300 m) of wire |
| Ethernet Port..... | 10/100 Base-T with Power-over-Ethernet |
| Operating Temperature..... | +32°F to +122°F (0°C to +50°C) |
| Operating Humidity..... | 5% to 95% Non-condensing |
| Total System Memory..... | 32MBytes Flash (non-volatile) memory |
| Device Capability..... | Total number of devices is limited only by memory |
| Macro Capability..... | Unlimited steps in a single macro |
| | Total number of macros is limited only by memory |
| | Macro capability on every button |
| Communications..... | USB programming port |
| Audio..... | Beeper |
| Enclosure..... | High-impact molded ABS plastic |
| Mounting..... | Integrated mounting wings, or screws through front bezel |
| Front Plate Dimensions (H x W)..... | 4.4 in (112mm) x 4.6 in (117mm) |
| Installation Cut-Out (H x W)..... | 3.7 in (94mm) x 3.7 in (94mm) |
| Total Depth in Wall..... | 1.2 in (31mm) Plus cables |
| Weight..... | 7.5 oz (212g) |
| Warranty..... | One Year (Parts & Labor) |

* All Specifications subject to change without notice.

** The KX2 uses a standard 4"x 4" electrical junction box. These should be available at most hardware stores or electrical supply stores online (ex. Granger.com).

NOTES:

- A dual gang outlet box will NOT work.
- The KX2 has .38" thick corner tabs, making the KX2 protrude .38" from the front edge of the junction box. Therefore, the electrical box should be mounted flush with the wall stud. Typically wall sheeting materials like drywall are ½" or thicker, allowing the KX2 to be flush with the wall sheeting. If the wall sheeting is thinner than .38", the junction box will need to be mounted set back.
- Use #8 – 32 flat head screws.
- Box should be 1.5" minimum depth.



Electrical Junction Box
4" h x 4" w x 1.5" d



The KX2 hard buttons (12) may be custom laser etched using the RTI Laser Shark service.

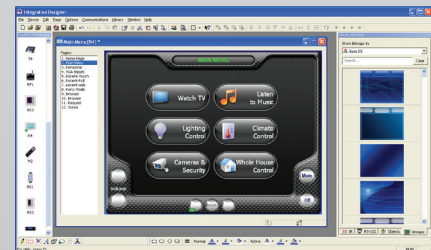
Accessories

| | |
|-------------|-------------------------------|
| XP-3 | Advanced Control Processor |
| XP-6 | Advanced Control Processor |
| XP-8s | Advanced Control Processor |
| CB-8 | Touchpanel Connecting Block |
| CM-232 | RS-232 Communication Module |
| CPB-1 | Control Port Connecting Block |
| ECB-5 | IR Connecting Block |
| ESC-2 | Ethernet Serial Converter |
| IPE-4 | IR Port Expander |
| PCM-4 | Port Control Module |
| RCM-4 | Ethernet Relay Module |
| vIRsa Mouse | IR Emitter |



Other RTI Products

| | |
|---------------|-------------------------------------|
| Virtual Panel | PC Software Interface (App) |
| RTiPanel | Mobile Software Interface (App) |
| SURFiR | Companion Remote Control |
| T1-B+ | Remote Control |
| T2-Cs+ | Remote Control |
| T2i | Remote Control |
| T2x | Remote Control |
| T3x | Remote Control |
| T3-V+ | Remote Control |
| RK1+ | 2-4-8 Button In-Wall Keypad |
| RKM-1+ | In-Wall Audio Distribution Keypad |
| RK3-V | 3.5 inch In-Wall Touchpanel Keypad |
| KX7 | 7 inch In-Wall Touchpanel |
| CX7 | Countertop/Under-Cabinet Touchpanel |
| RP-4 | RF Control Processor |
| AD-4x | Distributed Audio System |
| AD-8x | Distributed Audio System |
| RTiDock | Dock for Apple iPod® |
| CP-450 | 4 Channel Amplifier |
| CP-1650 | 16 Channel Amplifier |



Integration Designer® Programming Software

5775 12th Avenue East, Suite 180, Shakopee, MN 55379
PH: (952) 253-3100 • Website: www.rticorp.com

RTI
It's Under Control®